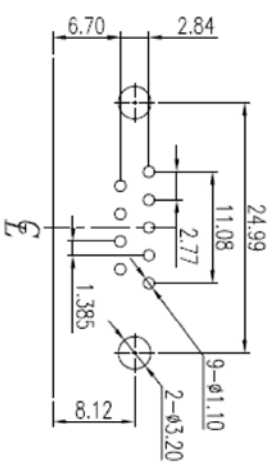
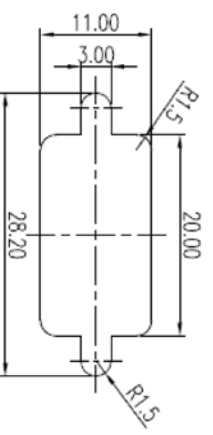
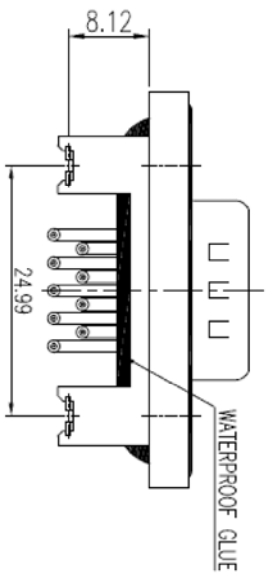
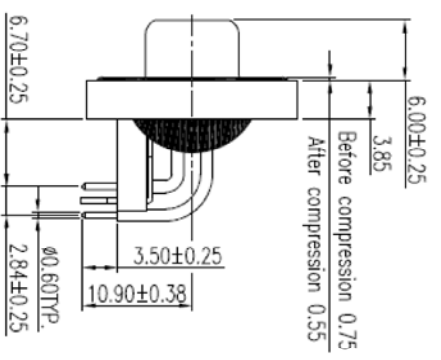
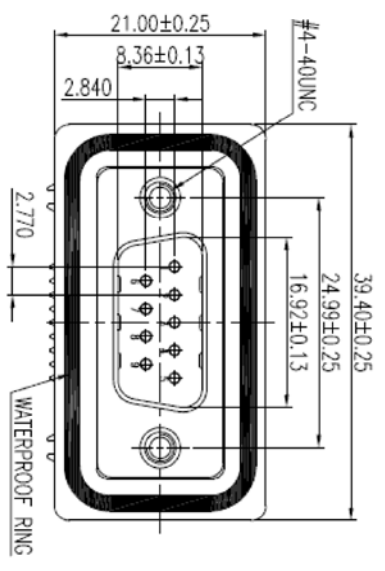


ROHS COMPLIANT



RECOMMENDED PCB LAYOUT

CONFIDENTIAL

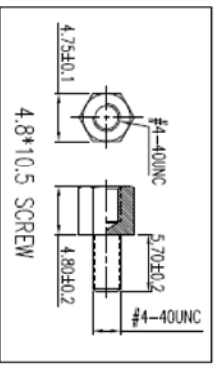
© Copyright 2022 Regal Electronics, Inc. This drawing is the property of Regal Electronics and contains confidential information, trade secret information and/or know-how which is the property of Regal Electronics. By accepting this drawing, the recipient agrees not to provide, or otherwise make available, the drawing or any information or know-how embodied therein, to any third party without prior written authorization.

SPECIFICATIONS

- 1.1 Voltage: 250 VAC(RMS) Max.
- 1.2 Current Rating: 5 Ampere per Contact
- 1.3 Contact Resistance: 10 Milliohms Max.
- 1.4 Insulation Resistance: 5000 Megohms Min.
- 1.5 Dielectric Withstanding Voltage: 1000V AC(RMS)
- 1.6 Screwing torque : 3.0 Kgf.cm Max.
- 1.7 Total Mating Force: 6.4 Kgf Max.
- 1.8 Total Unmating Force: 1.2 Kgf Min.
- 1.9 Operating Temperature: -25°C to +85°C
- 1.10 Salt Spray: 48 Hours.

NOTES

- 1. MATERIAL:
 - Housing:PET, UL 94V-0, Color:Black.
 - Terminal:Copper Alloy.
 - Shell:SPCC.
 - Boardlock:Copper Alloy.
 - Rivet:Copper Alloy.
 - Screw:Copper Alloy.
 - Waterproof Ring: Silica Gel.
 - Waterproof Glue: Epoxy.
- 2. FINISH:
 - Terminal:Full Gold Plated over Nickel Area.
 - Shell:Nickel Plated.
 - Boardlock:Trn Alloy.
 - Rivet:Nickel Plated.
 - Screw:Nickel Plated.



Tolerance	
.x	±0.25
.xx	±0.20
ang.	±3°

UNIT: mm



DRAWN: KIM	DATE: 8/24/22	TITLE: D-SUB 9 PIN MALE DIP RIGHT ANGLE WATER PROOF IP67
CHECKED:	DATE:	
ENGINEER:	DATE:	
APPROVED:	DATE:	
APPROVED:	DATE:	
APPROVED:	DATE:	
SCALE: NONE	DRAWING NO. B WP4019-09	REV A
SHEET 1 of 1		

REV	ECO NO.	DATE	BY	APP'D
A	REL TO PRODUCTION PER ECO 001	8/24/22	KL	

DWG NO. WP4019-09