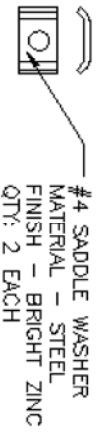
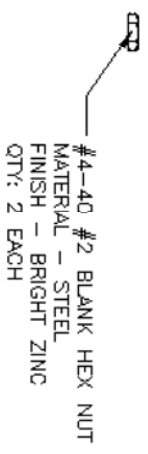
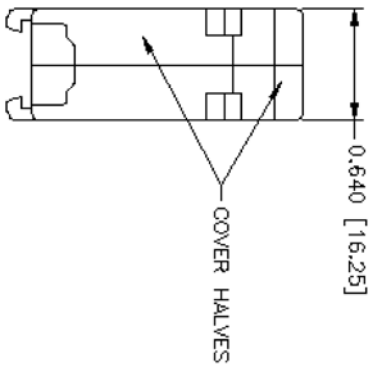
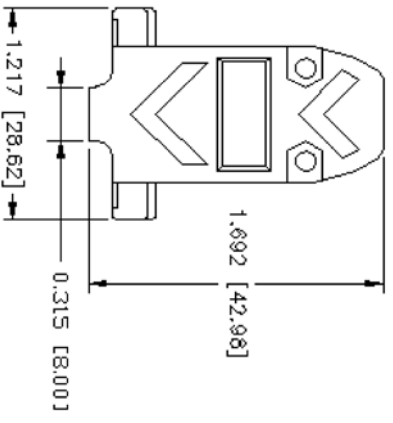
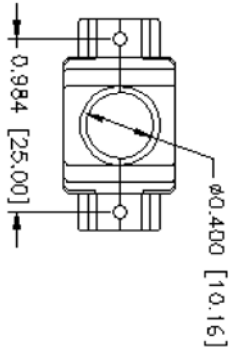


ROHS COMPLIANT

REV	ECO NO.	DATE	BY	APP'D
A	REL TO PRODUCTION PER ECO 001	8/10/06	KL	
B	add 0.315 dimension PER ECO 002	4/26/19	KL	



CONNECTOR COVER:
1. MATERIAL: ABS COMPOUND - UL94HB
2. FINISH: NICKEL PLATING
3. DIMENSIONS: INCHES [MM]
4. TOLERANCE: ±0.015 [0.381]

CONFIDENTIAL

© Copyright 2019 Regal Electronics, Inc.
This drawing is the property of Regal Electronics and contains confidential information, trade secret information and/or know-how which is the property of Regal Electronics. By accepting this drawing, the recipient agrees not to provide, or otherwise make available, the drawing or any information or know-how embodied therein, to any third party without prior written authorization.



DRAWN: KIM	DATE: 8/10/06	TITLE: D-SUB BACKSHELL METALIZED PLASTIC COVER
CHECKED:	DATE:	SCALE: NONE
ENGINEER:	DATE:	SIZE: B
APPROVED:	DATE:	DRAWING NO. R4102-09
APPROVED:	DATE:	REV: B
APPROVED:	DATE:	SHEET 1 of 1

5 4 3 2 1