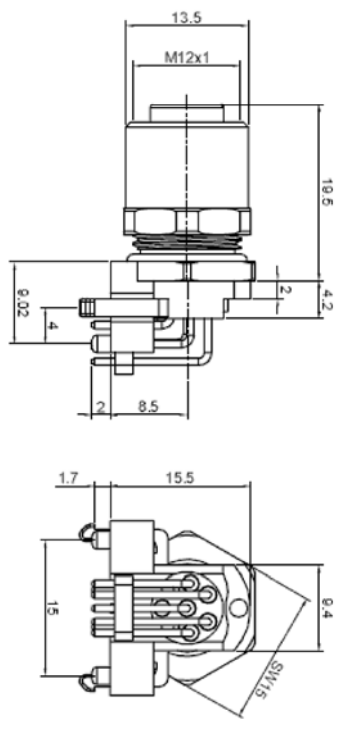


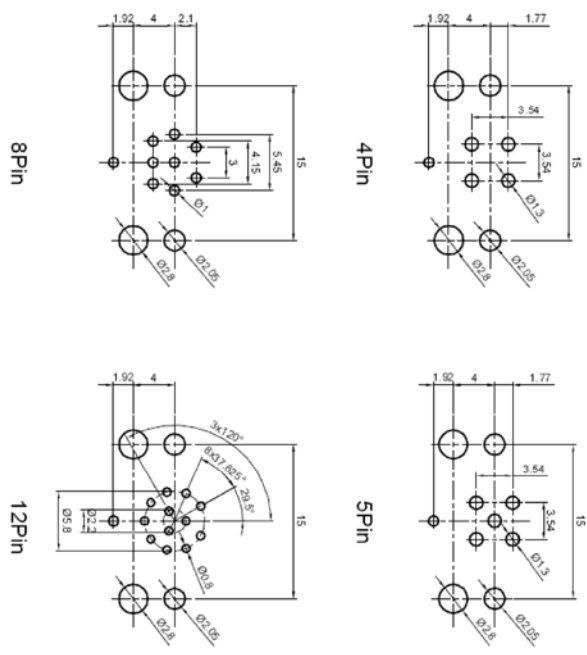
ROHS COMPLIANT

REV	ECO NO.	DATE	BY	APP'D
A	REL TO PRODUCTION PER ECO 001	8/7/19	KL	



**General Specifications**

- Connector locking system: Screw
- Termination: Dip Solder
- Temperature range: -40°C ~ +85°C
- Mating Cycles: > 100
- Degree of protection: IP67 when mated
- Contact: CUSH
- Contact plating: Gold plated
- Housing: PA66+GF
- Base shell: CuZn nickel plated
- Hex nut: CuZn nickel plated
- Sealing: FKW/NBR
- Adhesive: Epoxy



Pin front view		Rated voltage	Rated current
A coded	D coded		
		250V	4A
		60V	4A
		30V	2A
		30V	1.5A

Tolerance  
 <1.5: ±0.05  
 1.5~10: ±0.1  
 >10: ±0.2

UNIT: mm

CONFIDENTIAL



© Copyright 2019 Regal Electronics, Inc.  
 This drawing is the property of Regal Electronics and contains confidential information, trade secret information and/or know-how which is the property of Regal Electronics. By accepting this drawing, the recipient agrees not to provide, or otherwise make available, the drawing or any information or know-how embodied therein, to any third party without prior written authorization.

DRAWN: KIM	DATE: 8/7/19	TITLE: M12 Female Right Angled PCB Type
CHECKED:	DATE:	
ENGINEER:	DATE:	
APPROVED:	DATE:	
APPROVED:	DATE:	
APPROVED:	DATE:	
SCALE: NONE	DRAWING NO. B M12ARAFX	REV A
		SHEET 1 of 1