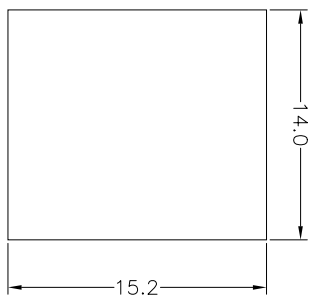
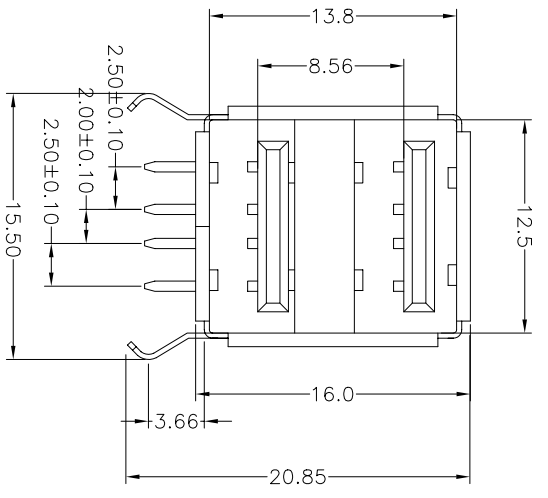
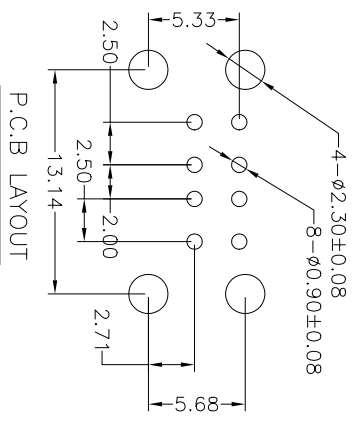
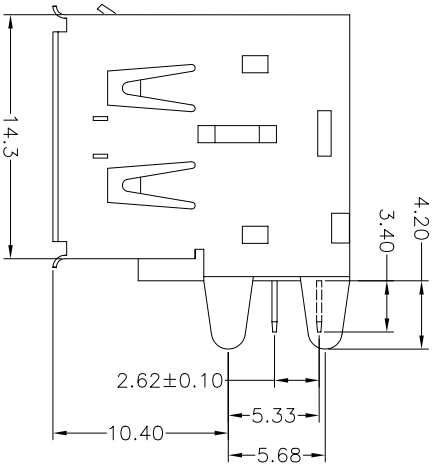
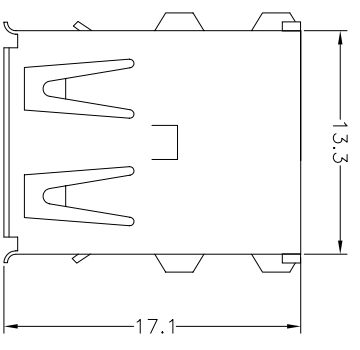


ROHS COMPLIANT



Cut out

- NOTES:
1. MATERIAL
 - 1.1 CONTACTS: PHOSPHOR BRONZE, GOLD PLATED
 - 1.2 SHELL: SPCC, NICKEL PLATED
 - 1.3 INSULATOR: PBT UL 94V-0
 2. ELECTRICAL
 - 2.1 TERMINATION RESISTANCE: 30Ω OHMS MAX
 - 2.2 INSULATION RESISTANCE: 2000M OHMS MIN AT 250V DC
 - 2.3 DIELECTRIC WITHSTANDING VOLTAGE: AC 750V/min.R.M.S.
 3. MECHANICAL
 - 3.1 MATING FORCE: 35 NEWTONS MAX
 - 3.2 UNMATING FORCE: 10 NEWTONS MIN
 4. ENVIRONMENTAL
 - 4.1 TEMPERATURE RANGE: -50°C TO +105°C
 - 4.2 RECOMMENDED PC BOARD THICKNESS: 1.57MM
 - 4.3 GENERAL TOLERANCE: ±0.1/0.004

Tolerance	
.x	±0.2
.xx	±0.1
ang.	±2°

UNIT: mm

CONFIDENTIAL

© Copyright 2008 Regal Electronics, Inc. This drawing is the property of Regal Electronics and contains confidential information, trade secret information and/or know-how which is the property of Regal Electronics. By accepting this drawing, the recipient agrees not to provide, or otherwise make available, the drawing or any information or know-how embodied therein, to any third party without prior written authorization.

REV	ECO NO.	DATE	BY	APP'D
A	REL TO PRODUCTION PER ECO 001	6/26/08	KL	
B	cutout dimension changed PER ECO 002	7/29/08	KL	

DRAWN: KIM	DATE: 6/26/08	TITLE: DUAL USB A TYPE EXTRA LONG PIN
CHECKED:	DATE:	
ENGINEER:	DATE:	
APPROVED:	DATE:	
APPROVED:	DATE:	
APPROVED:	DATE:	

SCALE: NONE	DRAWING NO. B R90D-A	REV B
SHEET 1	OF 1	

