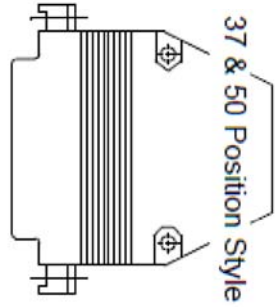
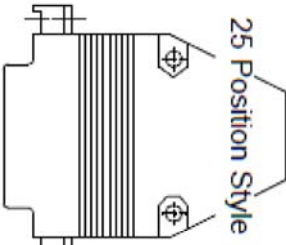
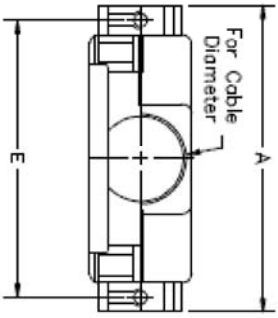
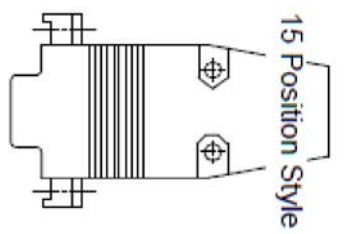
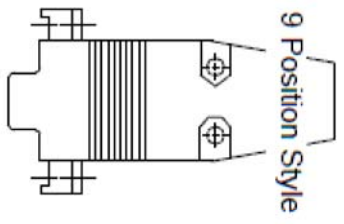
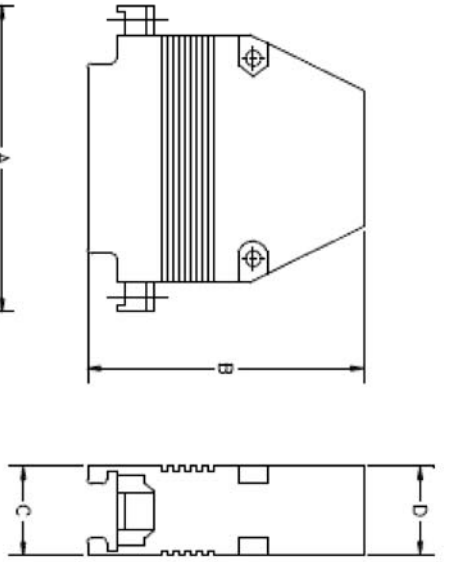


ROHS COMPLIANT

REV	ECO NO.	DATE	BY	APP'D
A	REL TO PRODUCTION PER ECO 001	5/27/08	KL	



Position	A	B	C	D	E
9	1.22 (31.00)	2.08 (53.00)	.650 (16.50)	.551 (14.00)	.983 (24.99)
15	1.57 (40.00)	1.89 (48.20)	.622 (15.80)	.630 (16.00)	1.31 (33.32)
25	2.11 (53.50)	1.91 (48.60)	.630 (16.00)	.638 (16.20)	1.85 (47.04)
37	2.72 (69.20)	1.91 (48.60)	.630 (16.00)	.819 (20.80)	2.50 (63.50)
50	2.63 (67.00)	1.90 (48.40)	.732 (18.60)	.905 (23.00)	2.40 (61.20)

UNIT: inches(mm)

**FEATURES:**

- Meets FCC #20780 class A and class B specifications
- All metal design
- Accommodates multiple cable sizes
- Fits all standard & high density cable type D-Subs
- Complete with all hardware
- Zinc die cast with nickel overplate

**NOTE:** Grommets are required & sold separately

CONFIDENTIAL



© Copyright 2008 Regal Electronics, Inc. This drawing is the property of Regal Electronics and contains confidential information, trade secret information and/or know-how which is the property of Regal Electronics. By accepting this drawing, the recipient agrees not to provide, or otherwise make available, the drawing or any information or know-how embodied therein, to any third party without prior written authorization.

DRAWN: KIM	DATE: 5/27/08	TITLE: METAL BACKSHELL EMC SHIELDED TYPE
CHECKED:	DATE:	SIZE: B
ENGINEER:	DATE:	DRAWING NO. R4203-SERIES
APPROVED:	DATE:	SCALE: NONE
APPROVED:	DATE:	SHEET 1 of 1