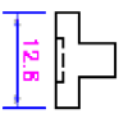
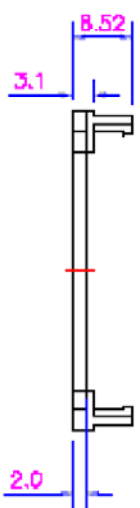
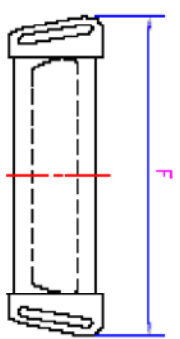
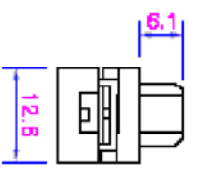
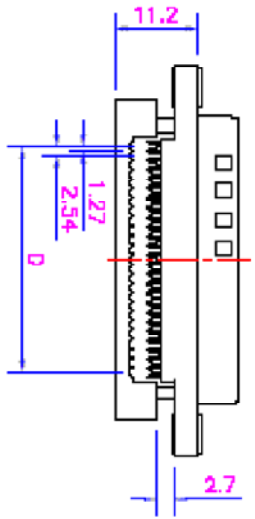
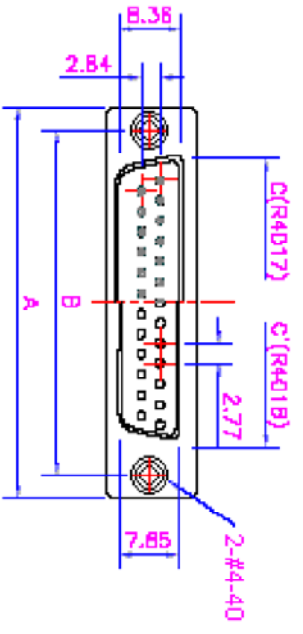


ROHS COMPLIANT

REV	ECO NO.	DATE	BY	APP'D
A	REL TO PRODUCTION PER ECO 001	3/14/07	KL	



STRAIN RELIEF

SPECIFICATIONS:
 .WIRE SIZE: AWG 28 ~ 28
 .DIELECTRIC MATERIAL: PBT +50%GF U194V-0
 .CONTACT FLASHING: GOLD OVER NICKEL
 .CONTACT MATERIAL: PHOSPHOR BRONZE
 .INSULATION RESISTANCE: 1000MegOhms AT 500Vdc
 .OPERATING TEMPERATURE: -55°C ~ 105°C
 .CONTACT RESISTANCE: 15milliohms MAX.

POSITIONS	A	B	C	C'	D	E
9	30.89	24.99	16.92	16.25	10.16	16.33
15	39.14	33.32	25.25	24.58	17.78	24.66
25	53.09	47.04	38.86	38.30	30.48	38.38
37	69.39	63.5	55.45	64.76	45.72	54.84

Tolerance
 .x ±0.2
 .xx ±0.1
 ang. ±2°

UNIT: mm

CONFIDENTIAL



© Copyright 2007 Regal Electronics, Inc.
 This drawing is the property of Regal Electronics and contains confidential information, trade secret information and/or know-how which is the property of Regal Electronics. By accepting this drawing, the recipient agrees not to provide, or otherwise make available, the drawing or any information or know-how embodied therein, to any third party without prior written authorization.

D-SUB IDC TYPE CONNECTOR

DRAWN: KIM	DATE: 3/14/07	TITLE: D-SUB IDC TYPE CONNECTOR
CHECKED:	DATE:	
ENGINEER:	DATE:	
APPROVED:	DATE:	
APPROVED:	DATE:	
APPROVED:	DATE:	
SCALE: NONE	DRAWING NO. B R4017/R4018-xxT-BK	REV A
SHEET 1 OF 1		