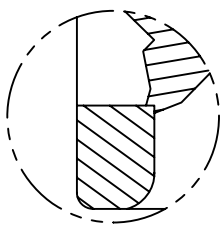
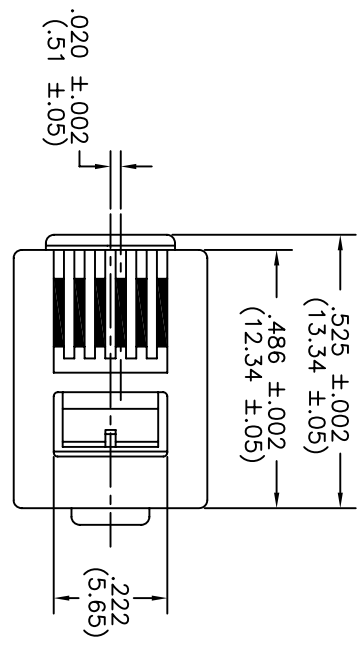
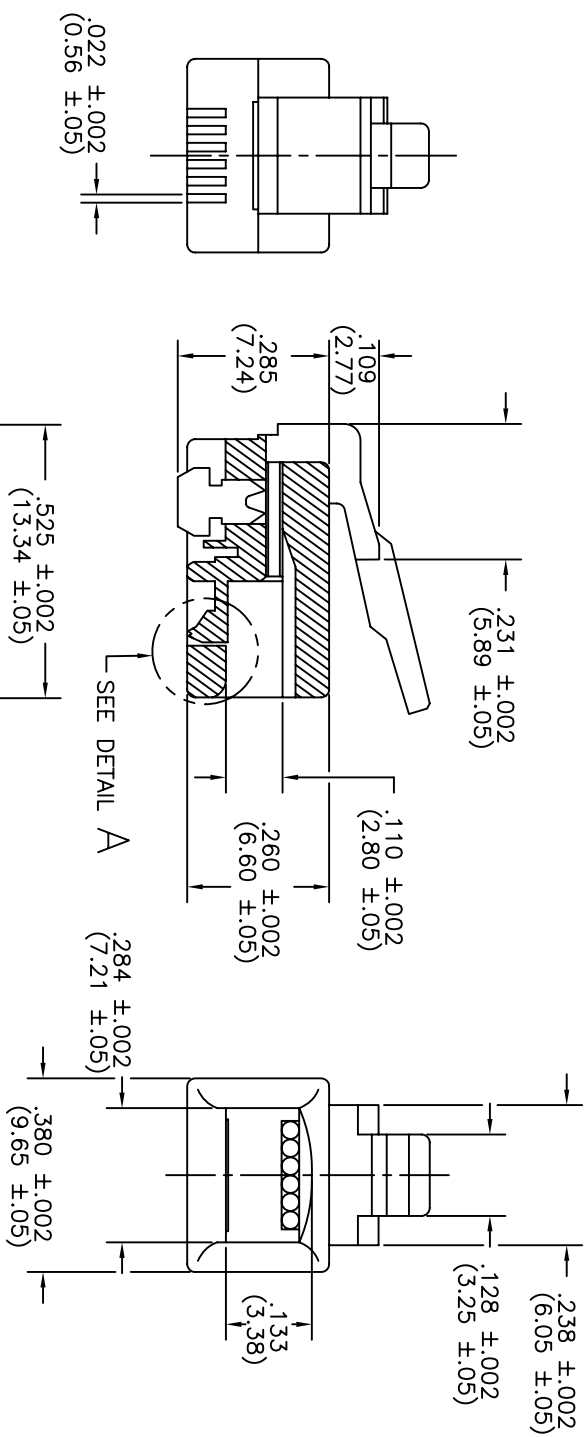


ROHS COMPLIANT

REV	ECO NO.	DATE	BY	APP'D
A	REL TO PRODUCTION PER ECO 001	3/14/07	KL	



DETAIL A

UNIT: inches(mm)

- MATERIALS:**
- HOUSING: POLYCARBONATE, UL 94V-2
 - TERMINAL: 0.014" PHOSPHOR BRONZE PLATED WITH GOLD FLASH
 - ELECTRICAL:
 - CONTACT CURRENT RATING: 1.5 A.
 - DIELECTRIC VOLTAGE: AC 1000V
 - INSULATION RESISTANCE: 500 MEGOHM MIN.

CONFIDENTIAL

© Copyright 2007 Regal Electronics, Inc. This drawing is the property of Regal Electronics and contains confidential information, trade secret information and/or know-how which is the property of Regal Electronics. By accepting this drawing, the recipient agrees not to provide, or otherwise make available, the drawing or any information or know-how embodied therein, to any third party without prior written authorization.

DRAWN: KIM	DATE: 3/14/07	TITLE: MODULAR PLUG
CHECKED:	DATE:	SIZE: B
ENGINEER:	DATE:	DRAWING NO.: R1001-6P6C
APPROVED:	DATE:	SCALE: NONE
APPROVED:	DATE:	SHEET 1 of 1
APPROVED:	DATE:	REV A



5 4 3 2 1

A B C D