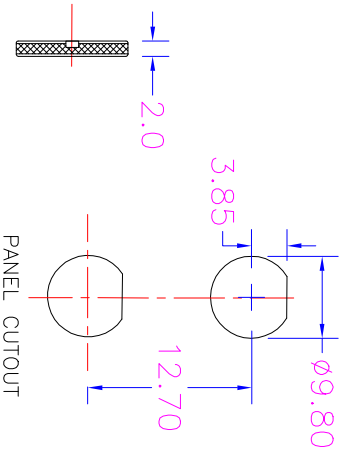
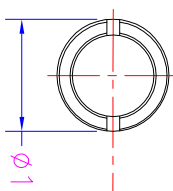
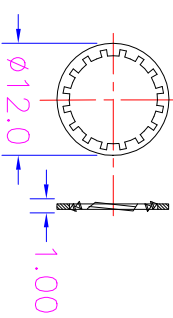
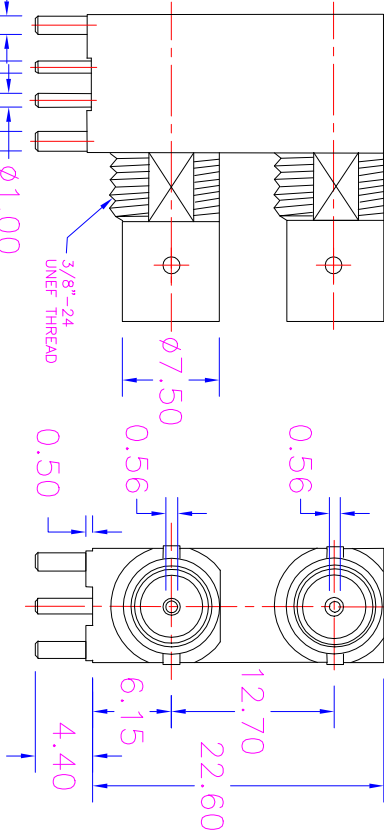
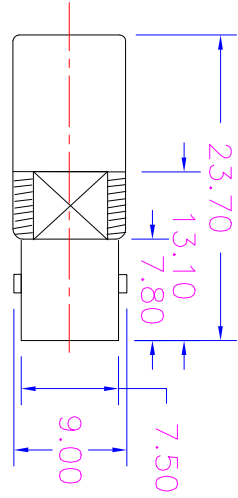


RoHS COMPLIANT

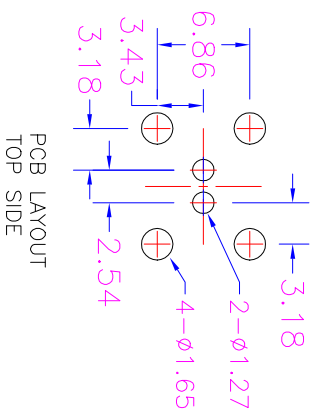
REV	ECO NO.	DATE	BY	APP'D
A	REL TO PRODUCTION PER ECO 001	9/07/06	KL	

DWG NO. BNCM31202-LM-75R



Tol.: ±0.4mm UNIT: mm

**SPECIFICATIONS**  
**MECHANICAL:**  
 BODY: GOLD PLATING OVER ZINC ALLOY  
 FEMALE CONTACTS: GOLD PLATING OVER PHOSPHOR BRONZE  
 EXTENSION CONTACTS: GOLD PLATING OVER BRASS  
 INSULATORS: DELRIN WITH 20% TEFLON  
 RETENTION WASHER: STEEL WITH NICKEL PLATING  
 NUT: S45C STEEL WITH NICKEL PLATING  
**ELECTRICAL:**  
 NORMAL IMPEDANCE: 75 OHMS  
 RETURN LOSS: -30dB Min/750MHz  
 OPERATING VOLTAGE: 500Vrms  
 CONTACT RESISTANCE: 3.0 Milliohms Max.  
 DIELECTRIC WITHSTANDING VOLTAGE: 1000 VRMS  
 INSULATION RESISTANCE: 5000 Megohms Min.  
 TEMPERATURE RANGE: -65°C - +165°C



CONFIDENTIAL

© Copyright 2006 Regal Electronics, Inc. This drawing is the property of Regal Electronics and contains confidential information, trade secret information and/or know-how which is the property of Regal Electronics. By accepting this drawing, the recipient agrees not to provide, or otherwise make available, the drawing or any information or know-how embodied therein, to any third party without prior written authorization.



DRAWN: KIM	DATE: 9/07/06	TITLE: DUAL PORTS MINI RIGHT ANGLE PCB MOUNT BNC CONNECTOR
CHECKED:	DATE:	
ENGINEER:	DATE:	
APPROVED:	DATE:	
APPROVED:	DATE:	
APPROVED:	DATE:	
SCALE: NONE	SIZE: B	DRAWING NO.: BNCM31202-LM-75R
		REV: A
		SHEET 1 of 1

PCB LAYOUT TOP SIDE

C-BNCM31202-LM-75R

A